

TREND

Rivestimenti
Upholstery

017
05/2012

Upholstery

P-RADIO 

10



651  Rosso P-10



656  Blureale P-10



659  Verdechiaro P-10



657  Grigio P-10



654  Nero P-10

Composizione: 100% Poliestere FR

Peso: Gr. 560/mtl

Abrasion: UNI EN ISO 12947:2000 oltre 50.000 cicli Martindale

Solidità luce/colore: UNI EN ISO 105-B02 Xenotest (6)

Omologazione: I – Classe 1, EN - 1021 Part 1-2, UK – BS 7176 medium hazard, D – B1 DIN 4102, F – M1

Le proprietà ignifughe sono intrinseche nella fibra e non da trattamenti aggiuntivi

Composition: 100% Polyester FR

Weight: Gr. 560/lmt

Abrasion: UNI EN ISO 12947:2000 more than 50.000 Martindale cycles

Color/Light solidity: UNI EN ISO 105-B02 Xenotest (6)

Approvals: I – Classe 1, EN - 1021 Part 1-2, UK – BS 7176 medium hazard, D – B1 DIN 4102, F – M1

the flame-retardant properties are inherent to the fibre and are not provided by additional treatments

R-BLOOM

10



121 Rosso R-10



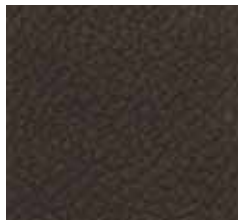
120 Viola R-10



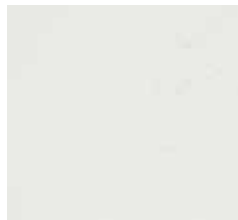
126 BLU R-10



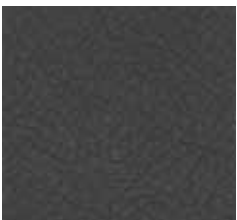
123 Tortora R-10



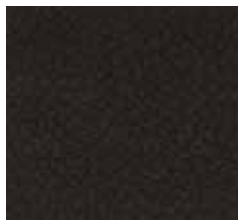
133 Testadimoro R-10



128 Bianco R-10



127 Grigiochiaro R-10



124 NERO R-10

Composizione: 15% Poliuretano – 85% PVC

Peso: Gr. 770/mtl

Abrasion: UNI EN ISO 12947:2000 oltre 50.000 cicli Martindale

Solidità luce/colore: UNI EN ISO 105-B02 Xenotest (6)

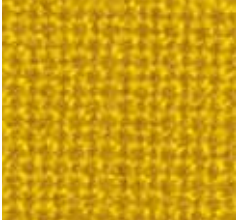
Composition: 15% Polyurethan – 85% PVC

Weight: Gr. 770/lmt

Abrasion: UNI EN ISO 12947:2000 more than 50.000 Martindale cycles

Color/Light solidity: UNI EN ISO 105 B02 Xenotest (6)

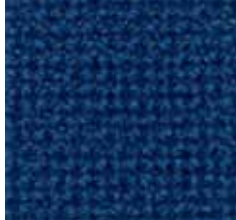
Options



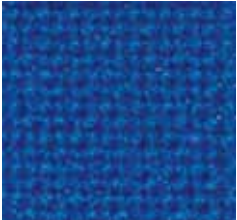
420  Giallolimone C-30



411  Rossovivo C-30



409  Blupavone C 30



416  Blureale C 30



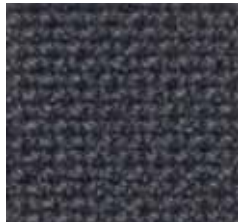
410  Verdebottiglia C 30



418  Marrone C 30



419  Verdementa C 30



407  Grigio C-30



401  Nero C-30

Composizione: 100% Poliestere FR (Trevira CS)

Peso: Gr. 630/mtl

Abrasion: UNI EN ISO 12947:2000 oltre 120.000 cicli Martindale

Solidità luce/colore: UNI EN ISO 105-B02 Xenotest (5)

Omologazione: I - Classe 1, EN - 1021 Part 1-2, F - M1, D - B1 DIN 4102, UK - BS 5852 Crib 5 OEKO TEX 072150.0 - IMO 688 (17), 563 (14), 653 (16)

Le proprietà ignifughe sono intrinseche nella fibra e non da trattamenti aggiuntivi

Composition: 100% Polyester FR (Trevira CS)

Weight: Gr. 630/lmt

Abrasion: UNI EN ISO 12947:2000 more than 120.000 Martindale cycles

Color/Light solidity: UNI EN ISO 105-B02 Xenotest (5)

Approvals: I - Classe 1, EN - 1021 Part 1-2, F - M1, D - B1 DIN 4102, UK - BS 5852 Crib 5 OEKO TEX 072150.0 - IMO 688 (17), 563 (14), 653 (16)

The flame-retardant properties are inherent to the fibre and are not provided by additional treatments



160 Gialloocra E-30



162 Azzurro E-30



156 Verdegiaa E-30



151 Camoscio E-30



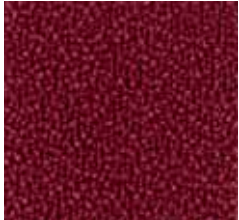
725  Arancio D-30



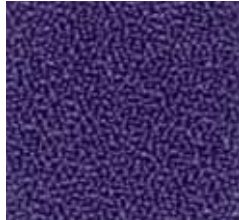
720  Giallo D-30



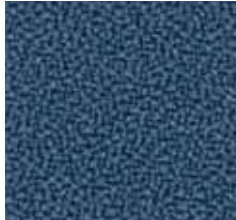
721  Rosso D-30



738  Rubino D-30



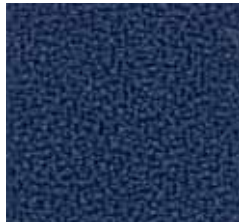
736  Viola D-30



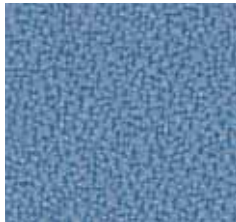
732  Bluavio D-30



332  Celeste D-30



734  Bluscuro D-30



722  Azzurro D-30



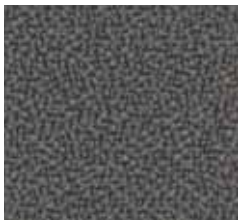
726  Blureale D-30



729  Verdementa D-30



333  Marrone D-30



727  Grigio D-30



724  Nero D-30



739  Grigioscuro D-30

Composizione: 100% Poliestere FR

Peso: Gr. 490/mtl

Abrasion: UNI EN ISO 12947:2000 oltre 100.000 cicli Martindale

Solidità luce/colore: UNI EN ISO 105-B02 Xenotest (5)

Omologazione: I - Classe 1, F - M1, D - B1 DIN 4102, BS7176 medium hazard EN - 1021 Part 1-2, A - B1 (OEnorm B3825), Q1 (Oenorm A3800 Teil 1) OEKO TEX 072150.0 - IMO 688 (17), 563 (14), 653 (16)

Composition: 100% Polyester FR

Weight: Gr. 490/lmt

Abrasion: UNI EN ISO 12947:2000 more than 100.000 Martindale cycles

Color/Light solidity: UNI EN ISO 105 B02 Xenotest (5)

Approvals: I - Classe 1, F - M1, D - B1 DIN 4102, GB - BS7176 medium hazard EN - 1021 Part 1-2, A - B1 (OEnorm B3825), Q1 (Oenorm A3800 Teil 1) OEKO TEX 072150.0 - IMO 688 (17), 563 (14), 653 (16)

F-PEGASO

30



266 Verdementa F-30

Composizione: 64% Cotone - 36% Poliuretano (Traspirante)
Peso: Gr. 420/mtl
Abrasione: UNI EN ISO 12947:2000 oltre 50.000 cicli Martindale
Solidità luce/colore: UNI EN ISO 105-B02 Xenotest (6)

Composition: 64% Cotton - 36% Polyurethan (Perspirable)
Weight: Gr. 420/lmt
Abrasion: UNI EN ISO 12947:2000 more than 50.000 Martindale cycles
Color/Light solidity: UNI EN ISO 105 B02 Xenotest (6)

S-SKILL



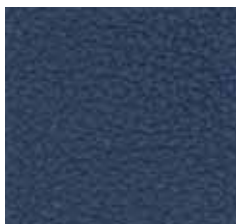
30



281 Rosso S-30



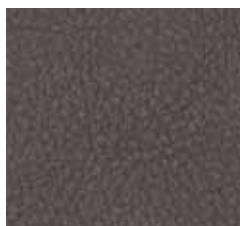
291 Rossoscuro S-30



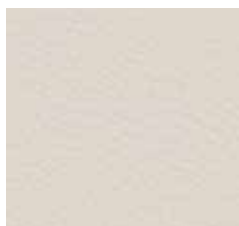
286 Bluscuro S-30

Composizione: 30% Cotone/Poliestere - 1% Poliuretano - 69% PVC
Peso: Gr. 730/mtl
Abrasione: UNI EN ISO 12947:2000 oltre 50.000 cicli Martindale
Solidità luce/colore: UNI EN ISO 105-B02 Xenotest (6)
Omologazione: I - Classe 1, UK - BS 5852-1:79, EN 1021 Part 2

Composition: 30% Cotton/Polyester - 1% Polyurethan - 69% PVC
Weight: Gr. 730/lmt
Abrasion: UNI EN ISO 12947:2000 more than 50.000 Martindale cycles
Color/Light solidity: UNI EN ISO 105 B02 Xenotest (6)
Approvals: I - Classe 1, UK - BS 5852-1:79, EN 1021 Part 2



283 Tortora S-30

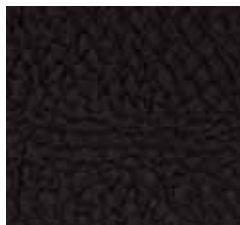


288 Magnolia S-30

Z-PLANET



30



114 Nero Z-30

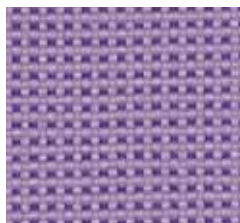
Composizione: 12,5% Cotone - 87,5% PVC
Peso: Gr. 900/mtl
Omologazione: I - Classe 1, UK - BS 5852-1:79, EN 1021 Part 2

Composition: 12,5% Cotton - 87,5% PVC
Weight: Gr. 900/lmt
Approvals: I - Classe 1, UK - BS 5852-1:79, EN 1021 Part 2

T-KING NEW



30



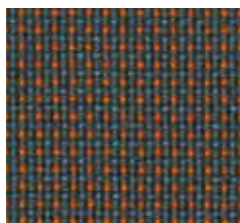
340 Lilla T-30



349 Verdechiaro T-30



359 Verdescuoro T-30



343 Tortora/arancio T-30



344 Tortora/nero T-30



345 Marrone T-30

Composizione: 100% Poliestere FR (Trevira CS)

Peso: Gr. 365/mtl

Abrasion: UNI EN ISO 12947:2000 oltre 60.000 cicli Martindale

Solidità luce/colore: UNI EN ISO 105-B02 Xenotest (5)

Omologazione: I - Classe 1, F - M1, D - B1 DIN 4102, UK - BS 5852 Crib 5, EN 1021 Part 1-2 OEKO TEX 072150.0 - IMO 688 (17), 563 (14), 653 (16)

Le proprietà ignifughe sono intrinseche nella fibra e non da trattamenti aggiuntivi

Composition: 100% Polyester FR (Trevira CS)

Weight: Gr. 365/lmt

Abrasion: UNI EN ISO 12947:2000 more than 70.000 Martindale cycles

Color/Light solidity: UNI EN ISO 105-B02 Xenotest (5)

Approvals: I - Classe 1, F - M1, D - B1 DIN 4102, UK - BS 5852 Crib 5, EN 1021 Part 1-2 OEKO TEX 072150.0 - IMO 688 (17), 563 (14), 653 (16)

The flame-retardant properties are inherent to the fibre and are not provided by additional treatments

M-MOOD



50



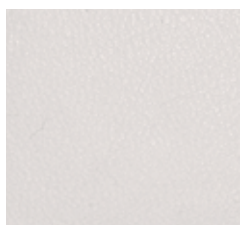
565 Arancio M-50



551 Rossovivo M-50



559 Verdechiaro M-50



558 Bianco M-50



554 Nero M-50

Composizione: 25% Cotone - 3% Poliuretano - 72% PVC

Peso: Gr. 970/mtl

Abrasion: UNI EN ISO 5470-2/03 oltre 50.000 cicli Martindale

Solidità luce/colore: UNI EN ISO 105-B02 Xenotest (6)

Omologazione: I - Classe 1, UK - BS 5852 Crib 5, EN 1021 Part 2 Antimuffa e antiacaro con Vinyzene by Bio-Pruf

Composition: 25% Cotton - 3% Polyurethan - 72% PVC

Weight: Gr. 970/lmt

Abrasion: UNI EN ISO 12947:2000 more than 50.000 Martindale cycles

Color/Light solidity: UNI EN ISO 105 B02 Xenotest (6)

Approvals: I - Classe 1, UK - BS 5852 Crib 5, EN 1021 Part 2 Antimicrobial and anti-mould agent Vinyzene by Bio-Pruf

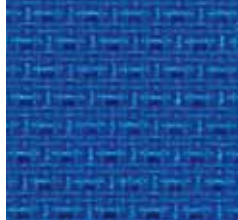
G-TRAVEL



50



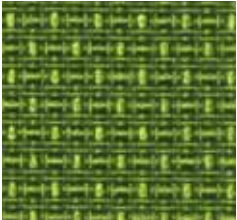
801 Rosso G-50



826 Blu reale G-50



822 Azzurro G-50



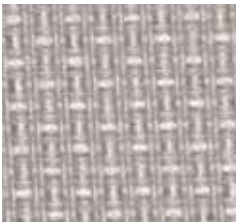
829 Verde G-50



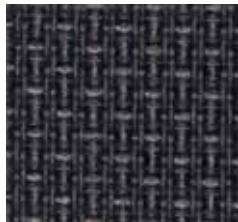
805 Marrone G-50



823 Beige G-50



807 Grigio chiaro G-50



827 Grigio G-50



804 Nero G-50

Composizione: 100% Poliestere FR (Trevira CS)

Peso: Gr. 630/mtl

Abrasione: UNI EN ISO 12947:2000 oltre 110.000 cicli Martindale

Solidità luce/colore: UNI EN ISO 105-B02 Xenotest (6)

Omologazione: I - Classe 1, F - M1, D - B1 DIN 4102, UK - BS 7176 medium hazard, EN 1021 Part 1-2

Le proprietà ignifughe sono intrinseche nella fibra e non da trattamenti aggiuntivi

Composition: 100% Polyester FR (Trevira CS)

Weight: Gr. 630/lmt

Abrasion: UNI EN ISO 12947:2000 more than 110.000 Martindale cycles

Color/Light solidity: UNI EN ISO 105-B02 Xenotest (6)

Approvals: I - Classe 1, F - M1, D - B1 DIN 4102, UK - BS 7176 medium hazard, EN 1021 Part 1-2

The flame-retardant properties are inherent to the fibre and are not provided by additional treatments

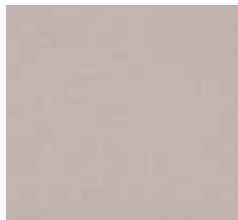
L-SILK



50



523 Marrone L-50



507 Grigio chiaro L-50

Composizione: 25% Cotone - 3% Poliuretano - 72% PVC

Peso: Gr. 970/mtl

Abrasione: UNI EN ISO 5470-2/03 oltre 50.000 cicli Martindale

Solidità luce/colore: UNI EN ISO 105-B02 Xenotest (6)

Omologazione: I - Classe 1, UK - BS 5852 Crib 5, EN 1021 Part 2 Antimuffa e antiacaro con Vinyzene by Bio-Pruf

Composition: 25% Cotton - 3% Polyurethan - 72% PVC

Weight: Gr. 970/lmt

Abrasion: UNI EN ISO 12947:2000 more than 50.000 Martindale cycles

Color/Light solidity: UNI EN ISO 105 B02 Xenotest (6)

Approvals: I - Classe 1, UK - BS 5852 Crib 5, EN 1021 Part 2 Antimicrobial and anti-mould agent Vinyzene by Bio-Pruf

H-QUADRO



50



901 Rosso H-50



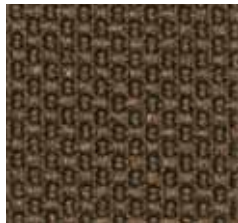
909 Bluscuro H-50



906 Blureale H-50



923 Sabbia H-50



905 Marrone H-50



907 Grigio H-50



904 Nero H-50

Composizione: 100% Poliestere FR (Trevira CS)

Peso: Gr. 630/mtl

Abrasion: UNI EN ISO 12947:2000 oltre 70.000 cicli Martindale

Solidità luce/colore: UNI EN ISO 105-B02 Xenotest (5)

Omologazione: I - Classe 1, F - M1, D - B1 DIN 4102, UK - BS 5852 Crib 5, EN 1021 Part 1-2 OEKO TEX 072150.0 - IMO 688 (17), 563 (14), 653 (16)

Le proprietà ignifughe sono intrinseche nella fibra e non da trattamenti aggiuntivi

Composition: 100% Polyester FR (Trevira CS)

Weight: Gr. 630/lmt

Abrasion: UNI EN ISO 12947:2000 more than 70.000 Martindale cycles

Color/Light solidity: UNI EN ISO 105-B02 Xenotest (5)

Approvals: I - Classe 1, F - M1, D - B1 DIN 4102, UK - BS 5852 Crib 5, EN 1021 Part 1-2 OEKO TEX 072150.0 - IMO 688 (17), 563 (14), 653 (16)

The flame-retardant properties are inherent to the fibre and are not provided by additional treatments

V-ALKEMIA PLUS



50



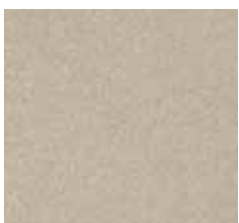
951 Rossoscuro V-50



956 Blu V-50



959 Verdechiaro V-50



953 Beige V-50



963 Marrone V-50



954 Nero V-50

Composizione: 25% Cotone - 3% Poliuretano - 72% PVC

Peso: Gr. 970/mtl

Abrasion: UNI EN ISO 5470-2/03 oltre 50.000 cicli Martindale

Solidità luce/colore: UNI EN ISO 105-B02 Xenotest (6)

Omologazione: I - Classe 1, UK - BS 5852 Crib 5, EN 1021 Part 2 Antimuffa e antiacaro con Vinyzene by Bio-Pruf

Composition: 25% Cotton - 3% Polyurethan - 72% PVC

Weight: Gr. 970/lmt

Abrasion: UNI EN ISO 12947:2000 more than 50.000 Martindale cycles

Color/Light solidity: UNI EN ISO 105 B02 Xenotest (6)

Approvals: I - Classe 1, UK - BS 5852 Crib 5, EN 1021 Part 2 Antimicrobial and anti-mould agent Vinyzene by Bio-Pruf

N-PELLE - LEATHER



70



209 Gialloocra N-70



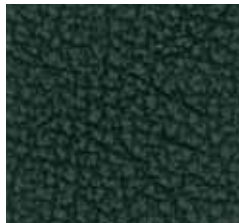
221 Rossovivo N-70



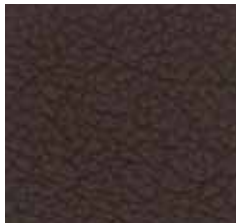
207 Blunotte N-70



222 Azzurro N-70



206 verdebottiglia N-70



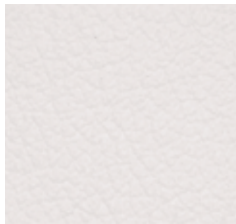
225 Testadimoro N-70



223 Beige N-70



208 Avorio N-70



224 Bianco N-70



204 Nero N-70

Pelle bovina naturale prima scelta.

Spessore: 1 mm

Rifinitura poliuretana

Buona resistenza a luce e sfregamento

Manutenzione

Pulizia: con aspirapolvere

Lavaggio: con spugna umida, asciugando immediatamente. La vera pelle può presentare delle imperfezioni o delle lievi variazioni di tonalità che, visto la naturalità del prodotto, non possono essere considerati un difetto.

First choice natural bovine leather

Thickness: 1 mm

Polyurethane finishing

Good resistance to light and friction

Maintenance

Cleaning: vacuum cleaner

Washing: wet towel or sponge, dry immediately

Real leather can present some imperfections and/or slight changes of the color shading. On account of the product genuinity, they cannot be considered defects of the product itself.



Throna s.r.l. | Via A. De Gasperi, 18 | 31050 Badoere di Morgano TV | Italy
Tel +39 0422 838 991 | Fax +39 0422 739 020
www.throna.com | throna@throna.com

